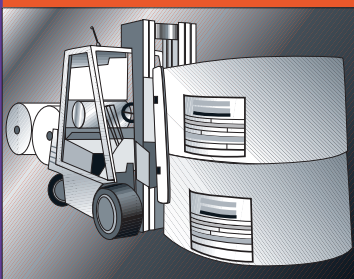
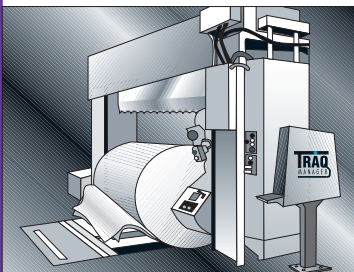
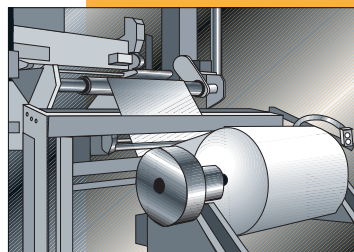
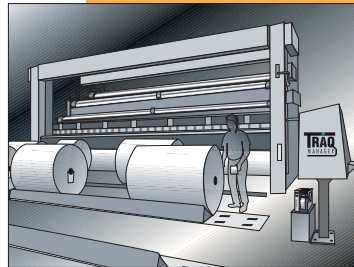
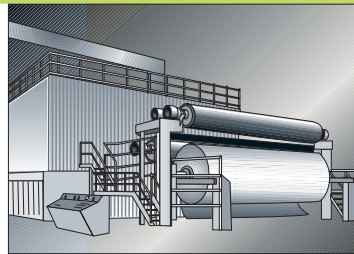


TRAQ MANAGER



leading
the way

in

**Roll Tracking
Systems**

the era of Windows-based production management systems

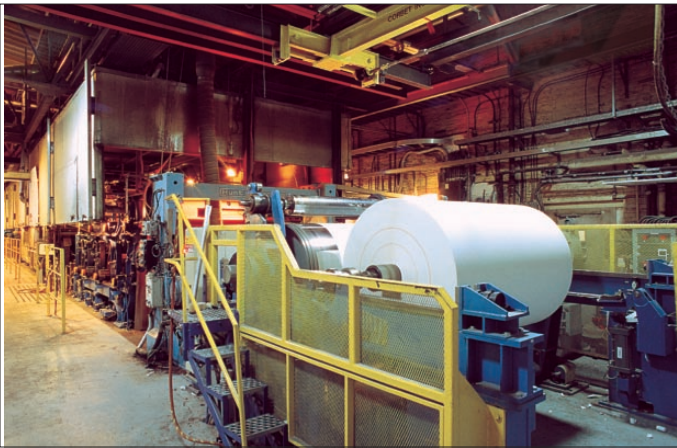
Today, Windows rules the world of desktop computing.

Because of its popularity, this user-friendly operating environment has spread from the desktops into the mill control rooms – and even onto the production floor. By far, Windows has become the user interface of choice, and the PC, the most widely preferred computer platform – across the mill, and around the world.

That's why we chose Windows for TRAQ Manager.

TRAQ Manager is the world's first PC-based roll-tracking and production management system running on industry-standard operating systems. Its simple, intuitive design makes it friendly to your users and maintenance staff – and easy on your pocketbook.

It's a comfortable, reliable, and cost-effective way to manage your production.



Key TRAQ Manager Functions

Order Entry	Production Planning	Production	Winding	Finishing
<p><i>Orders are entered directly into TRAQ Manager or received from your host/ERP system.</i></p> <p><i>Default consignee finishing instructions are automatically assigned to orders.</i></p> <p><i>3rd party production scheduling and planning packages can optimize production center usage.</i></p>	<p><i>Our Block Scheduling Module enables planning of production runs.</i></p> <p><i>The automatic trim program optimizes production runs, allowing for efficient paper machine patterns.</i></p> <p><i>Machine schedules are transmitted to TRAQ Manager workstations on the production floor.</i></p>	<p><i>TRAQ Manager logs the production of each jumbo reel and the quality data from the laboratory and on-line measurement systems.</i></p> <p><i>On-line production and conversion information is available to ERP packages.</i></p>	<p><i>The Winder Module shows the operators how to cut the jumbo reels to meet production and trim schedules and to satisfy customer needs.</i></p> <p><i>The module tracks all losses incurred in the cutting process. It can also direct automatic slitting.</i></p>	<p><i>Super Calendar, Re-reeler, Coater, Saturator, Embosser, Extruder, Sheeter and Rewinder Modules manage the conversion of rolls into value-added products, tracking production gains and losses.</i></p>

TRAQ Manager

superb access, **reliability** and support...

At your desktop or on the production floor, TRAQ Manager MES gives you seamless access into production, finishing and shipping.

From order entry through scheduling, trimming, winding, and finishing, right to the shipping dock – TRAQ Manager MES (Manufacturing Execution System) follows reels, rolls, pallets and bales through the mill. It provides timely detailed production data, empowering operators to make informed decisions that influence mill efficiency and throughput.

TRAQ Manager gives you round-the-clock operations.

Its fault-tolerant network uses redundant file servers to maintain ultra-high system uptime and data integrity. In addition, your Wrapmation support team is committed to your total satisfaction with 7-day 24-hour support to help diagnose problems and maintain system operation.

For your ease of mind, we will prototype your system before purchase, so you know exactly what you're buying.



TRAQ Manager's extensive array of screens and reports helps you manage each stage of your production process.

Key Functions

Wrapping

Using a bar-coded core tag, the wrapline either automatically or manually identifies weighs, measures, stencils, wraps and custom-labels the rolls according to customer specifications.

TRAQ Manager produces the custom roll labeling required. We support automatic label applicators.

Warehousing

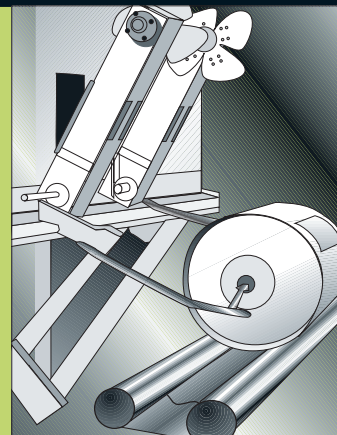
Products are dynamically assigned to loads and warehouse zones, to facilitate vehicle loading.

A rich set of options (e.g. checker's lists, shipment by zones, wireless LAN workstations) simplifies loading and shipping.

Just-in-time (JIT) management minimizes the double handling of

Shipping

Shipping documents, invoicing and Electronic Data Interchange (EDI) are automatically prepared for each shipment – according to customer profile – sharply reducing the labor needed.



Nobody **tracks** production like **Wrapmation**

hard value... solid performance

Our use of industry-standard hardware, software and networking gives you lower cost, and higher value.

Our standard SQL design opens the system to other industry mainstream products and keeps the system "evergreen", since hardware and software are easily upgraded to the latest models and releases.

Windows simplifies training and makes for easy expandability. It ensures that TRAQ Manager can be ported to newer versions of the operating system, workstation or network. Use of industry standards also means fewer spare parts, and easier support and maintenance.

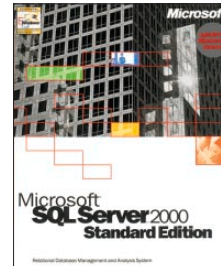
The result – great potential soon converts to hard savings.

TRAQ Manager is robust

Its fault-tolerant technology is designed to run 24 hours a day.

Ultra-reliable clustered PC file servers run the network, monitor transactions, and maintain redundant databases. In the event of a primary server breakdown, the secondary server takes over, without any interruption in service. This technology has been proven in hospitals, banks and other mission-critical applications.

Our PC workstations run standard Windows and Citrix thin client platforms. All printers and peripherals are all well-respected brands, such as Hewlett Packard, Zebra and Printronix. Peripherals may be connected to the local workstation or placed directly on the network.



Accurate inventory management leads to a better



W TRAQ Manager - Clamp Truck Screen - Allan Wrappmation - 15/29/53 - Truck No: 1					
Value:	THIS ROLL IS ALREADY LOADED YOU MAY SCAN A ZONE FOR UNLOADING				CLOSE LOAD
F2 - LOGON Scan a Zone to process or press CLEAR ENTRY to Cancel					
Roll Information					
Trappi No:	NBY305043D	NBY305043E	BUFFALO NEWS (THE WAREHOUSE)		Order Note
Width:	68.6	Diam:	101.6	Weight:	724
Quality:	SALE	Order :	000867	2	DEBOUT
Load Information		Zone : V10			
Load No:	5113	LOADED			
Zone:					
RollsToShip:	56	Weight Average:	380	Finished	Loaded
Vehicle No:	297710	Estimated:	20181	Rolls:	50
Code:	TANDEM-3	Capacity:	20502	Carrier:	KRISKA
CHANGE STATUS	INVENTORY	L. PATTERN	LOAD DETAIL	CLEAR ENTRY	CULL LOADING
TRANSFER TO LOAD	LOADS	DOCKS	BOLL DETAILS	CLEAN SCREEN	EXIT

Warehousing and shipping are easily managed from clamp trucks using our wireless LAN workstation.

the **right** system
for **you...**

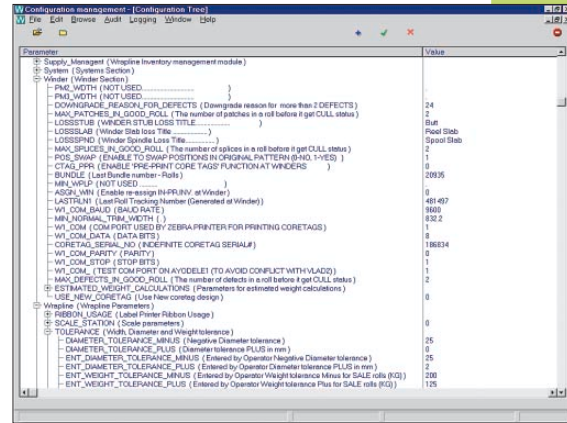
your mill
your people
your customers

We don't force-fit you into TRAQ Manager.

The system's unique modular design makes it highly configurable, allowing us to mold it to your needs.

It's not our system – it's your system.

From managers' screens to operator displays, customer labels and reports, your TRAQ Manager system is custom-tailored for your mill.



Our Configuration Module allows highly granular management of thousands of operating parameters.

Interactive displays

Operator screens are set up for easy repetitive entries that are common for mill floor operations.

The Windows operator interface is familiar and easy to learn.

Data is easily available for other Windows applications.

Custom shipping labels

Labels are tailored to the needs of your customers, using our "What You See Is What You Get" (WYSIWYG) label designer.

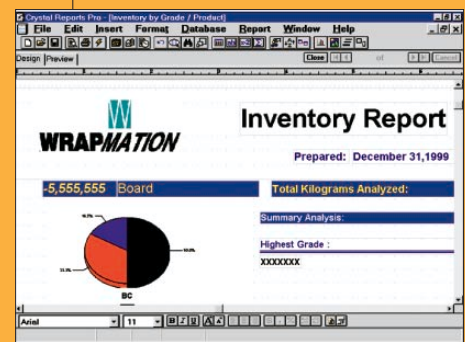
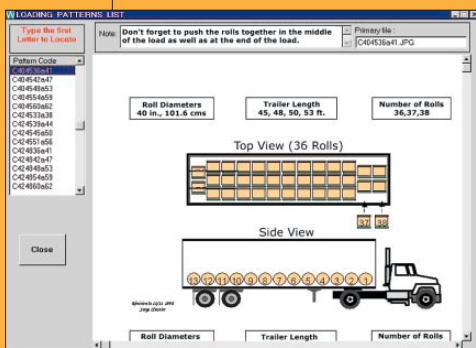
Your own label design provides just the information you desire. Barcodes and alphanumeric data are printed to your specification. We support dot-matrix, laser and thermal transfer printers, and robotic label applicators.

Configuration screen

Tailored reports

Each piece of data is available from the extensive SQL database. With standard reporting tools such as Seagate Crystal Reports, reports can easily be written by mill personnel.

Repetitive reports can be saved, reused and run weekly or monthly, as needed.



TRAQ Manager

System Functions

Order Entry

- Transfer orders from corporate host system or ERP (Enterprise Resource Planning)
- Local order entry/maintenance capability
- Detailed views of Order Status
- Load planning during order entry
- Reservation of inventory against future orders
- Extensive features to manage production, inventories and warehouse bays
- Electronic Bulletin Board for posting messages to processing centers
- Shift and crew management
- Inventory transfer/reassign to another order (client)

Production Planning

- Block scheduling optimizes machine schedules
- Trim program optimizes machine runs
- Use of 3rd party Paper Mill Scheduling and Planning
- Find and assign existing inventory to improve production efficiency
- Pattern creation/maintenance capability with priorities

Paper Machine

- Jumbo reels inventory management
- Automated collection of quality and lab data
- Automated creation of reel TAPPI, NARI and IFRA numbers
- Downtime tracking by shift, day, machine, causes, duration
- Production information available to external reporting or ERP applications

Winder

- Quality grading including Salable, Rewind, Cull, Quality Held
- Automatic detection and warning of underrun, overrun and near overrun
- Automatic/semi-automatic multi-roll bundling
- Complete time/shift/crew management
- Automatic linear footage interface and storage for machine priority
- Auto-slitler interface
- Automatic generation of log sheets
- Production reporting to ERP applications
- Extensive losses management including stub, slab, spindle, splices, holes, patches

Super Calendar, Coater, Saturator, Embosser, Extruder

- Tracks product conversions
- Keeps track of gains and losses
- Production reporting to ERP applications

Sheeter, Cutter

- Tracks consumption of rolls
- Produces labels and inventory of pallets, cartons, reams
- Automatic "lot number" assignment for tracking parentage back to process data
- Production reporting to ERP applications

Rewinder

- Product Conversion and Salvage modes
- One roll to many, many to one, many to many
- Production reporting to ERP applications

Wrapline

- Capable of driving fully automated wrapline, robotics
- PLC Interface for automatic wrapping instructions
- Automated labeling, application, stenciling on bilge and ends
- Custom label designs with "What You See Is What You Get" (WYSIWYG) designer
- Automatic/Priority assignment to warehouse bays or (JIT) shipping at wrapline
- Production reporting to ERP applications

Warehouse

- Powerful zone management minimizes roll handling
- Full-size screen wireless LAN workstations on clamp trucks
- Managing local and remote warehouses
- Roll and load Customer returns
- Managing received paper (for further processing, conversion), customer returns

Shipping

- Print roll lists, packing lists, bill of lading, commercial invoice (customs)
- Export shipping summaries to mill accounting system for invoicing
- Shipping plans/multiple shipping dates per order
- EDI transfer of shipping documents

Features

General Features

- Windows GUI front end, Microsoft SQL Server backend, Internet ready
- Multi-lingual support
- Fax-On-Demand lets customers request faxed reports via touch-tone telephone
- Highly configurable with tens of thousands of configuration options
- Ultra-detailed audit trails
- Practical application logs with automatic e-mail/pager alerts
- "Who Touched It Last" feature for finding lost rolls and pallets
- Full tracking of ream and roll parentage back to jumbo
- Context-sensitive help available on-line
- Archive storage on data warehouse or CD-ROM
- Extensive use of library of stored messages, comments, marks ...
- Calendar, calculators, tools

Hardware Features

- Standard IBM PC compatible, Microsoft NT network
- All open industry standard Printers, Scales, PLCs, open DCS's

Operating Systems

- Windows 2000, Windows NT, Windows ME, Windows 95/98, Citrix thin client

Standard Interfaces

- TCP/IP, flat ASCII files, OLE II, OPC, ODBC, XML, SQL

Languages used in development

- Clarion, Visual Studio.NET, Transact SQL, JAVA, Assembler and others

Rdbms (Relational Database Management System)

- Microsoft SQL Server, Oracle

The specifications are subject to change with individual system designs.

TRAQ Manager is a trademark of Wrapmation Inc.

Other products are trademarks or registered trademarks of their respective companies.

Mill photos used with permission of Spixel - Beauharnois.

SQL Box shot reprinted with permission from Microsoft Corporation.

Graphic design, illustrations and photography by GSF & Associates.

This brochure is printed on Condat's Supreme Dull 186M 93lb. (.0105 pt.).




WRAPMATION